

Cautions

- Great Bear Paediatric Leg Bags should be changed every 5-7 days
- The Paediatric Leg Bag should not be reused after disconnection from a catheter due to increased risk of infection
- Choking Hazard: Keep small parts out of the reach of children
- Use of any medical device carries associated risks. Device failures are rare, however in the event of a device failure of this product, you should contact Great Bear Healthcare using the details provided within this leaflet
- If a failure has resulted in a serious incident, such as significant deterioration of health or death, you should contact Great Bear Healthcare and your local Competent Authority as soon as possible. Details of your local Competent Authority can be found on your local government website

Order Codes

Great Bear Paediatric Leg Bags

All Paediatric Leg Bags come with Fabric Backing and one Leg Bag Strap as standard

Code	Capacity	Tube length	Qty
10101B	150ml	Direct Inlet	10
10125B	150ml	Adjustable Tube (45cm)	10
10111M	250ml	Direct Inlet	10
10135M	250ml	Adjustable Tube (45cm)	10
10103D	350ml	Direct Inlet	10
10151D	350ml	Adjustable Tube (45cm)	10

Dignity, Respect, Quality & Commitment.

Great Bear Healthcare Ltd

1 Lambourne Crescent,
Cardiff Business Park,
Cardiff, CF14 5GF

+44 (0)29 2074 7770

mail@gbhl.co.uk

www.greatbearhealthcare.co.uk

EC REP

MediReps Ltd

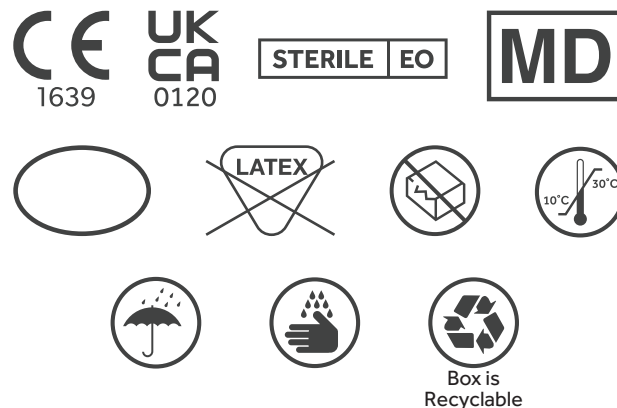
First Floor, Penrose
One, Penrose Dock,
Cork City, T23 KW81,
Ireland

MANDBBEARIFUV8/2023

Mummy, Daddy and Baby Bear

Paediatric Leg Bags

Instructions For Use



Your Paediatric Leg Bag

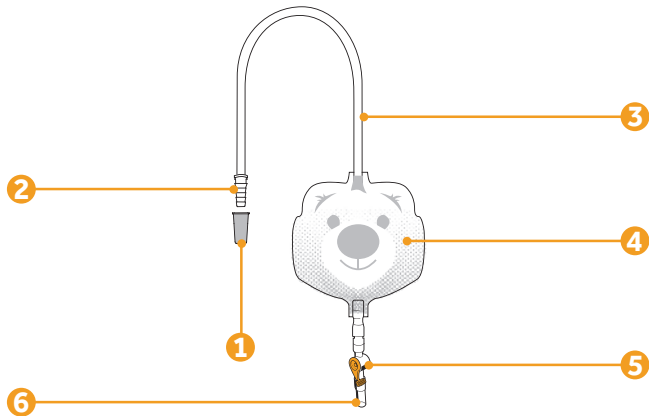
Great Bear Paediatric Leg Bags are for the daytime storage and drainage of urine. Baby Bear refers to our 150ml capacity Leg Bag, Mummy Bear refers to our 250ml capacity Leg Bag and Daddy Bear Refers to our 350ml capacity Leg Bag.*

Great Bear's Paediatric Range is specifically designed for babies and young children, with a fun child-friendly appearance and smaller capacities.

Designed to be connected directly to a Catheter or Sheath for continuous drainage and should be changed every 5-7 days.

Great Bear Paediatric Leg Bags can also be connected to a Night Bag for overnight drainage.

**Capacities are for guidance only. Great Bear Paediatric Leg Bags are not intended for use as a measuring device*



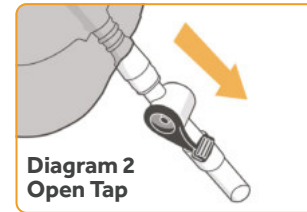
Key

1. Protective Cap	4. Centrally Positioned Eyelet
2. Ridged Inlet Connector	5. Outlet Tap
3. Inlet Tube	6. Silicone Sleeve

Instructions For Use

Before Use

1. Wash Hands
2. Open peel pouch and remove the leg bag from its packaging
3. Ensure the lever on the outlet tap (5) is in the closed position (Diagram 1)
4. Remove the grey protective cap (1) from the inlet connector (2)



Direct Connection

1. Insert the ridged inlet connector (2) into the end of the Indwelling Catheter or Sheath. Insert the connector fully to allow a secure connection
2. The Leg Bag should be positioned on the thigh or calf, depending on the tube length, and secured appropriately with the paw printed leg bag strap provided
3. Feed the leg bag strap through the centrally positioned eyelets (4) on the bag and ensure the wavy silicone line is facing the leg
4. Make sure the inlet tubing (3) isn't kinked which can restrict the flow of urine

Emptying

1. Empty the Leg Bag by pushing the lever on the outlet tap (5) downwards (Diagram 2)
2. After emptying, wrap the outlet tap with a tissue and pat a number of times before gently wiping around the inside of the valve. This will dislodge any residual urine
3. Remember to close the tap after emptying (Diagram 1)
4. The outlet tap (5) can be twisted to avoid accidental emptying

Overnight Drainage

If you require additional drainage for overnight use, a night bag can be connected as part of an overnight link system

1. When you go to bed, do not disconnect your Leg Bag from your Catheter or Sheath
2. Insert the connector of your Night Bag to the silicone sleeve (7) on your Leg Bag. Insert the connector fully to allow a secure connection
3. Once connected, turn the Leg Bag tap to the open position (Diagram 2) to allow the overnight drainage into the Night Bag
4. Before disconnecting the Night Bag in the morning, ensure the Leg Bag tap is in the closed position (Diagram 1)

Paediatric Leg Bags with Adjustable Tubing

Great Bear Paediatric Leg Bags with an adjustable tube have a 45cm inlet tube (3) which can be cut to the desired length and fitted with the spare connector included in the peel pouch. These Adjustable Leg Bags are designed for direct connection to a Sheath system

1. Place the Leg Bag on your leg in the desired position and secure as instructed on page 2
2. Measure how long you need the tubing and cut to the desired length
3. Remove the Leg Bag from your leg and insert the spare connector into the inlet tube
4. Connect the Leg Bag as per the instructions on page 2

Caution: Do not cut the tube length yourself if you are connecting to an Indwelling Catheter as the sterility of the product may become compromised. Please contact our helpline on 0800 055 6270 for further advice

Storage and Disposal

Paediatric Leg Bags should be stored at an ambient temperature and allowed to come to room temperature before use

Dispose with normal household waste – do not flush down the toilet